

MAINTENANCE ALERT

Talbert Channel Ocean Outlet Maintenance Removal of Excess Sand/Tidal Blockage

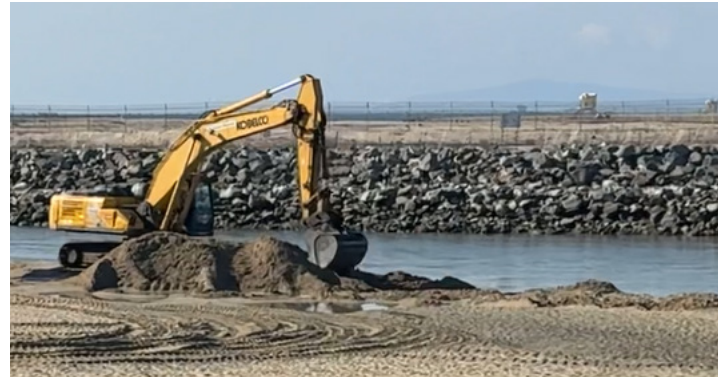
i WHAT

Crews will use large equipment to remove excess sand from the Talbert Channel outlet in Huntington Beach.

This emergency activity is needed to remove water flow blockage due to an accumulation of sand, naturally deposited in the outlet during the recent high swells. Sand will be placed along beach area on the north side of the channel outlet.

It is critical flood control maintenance to allow tidal flushing of the marsh to maintain water quality and protect habitat. The marsh supports many rare and endangered species.

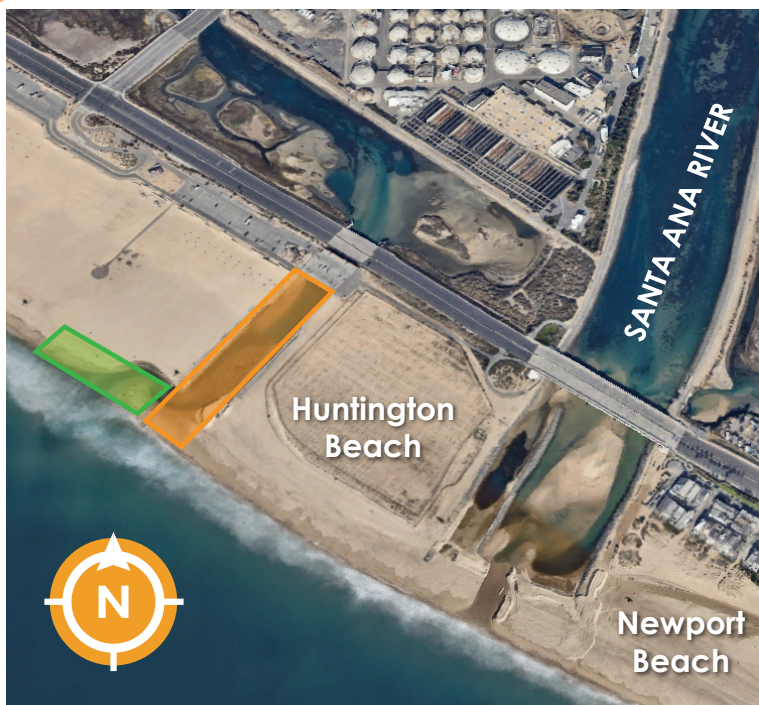
All work will be coordinated with State Parks Biologists and OCPW will have a biologist on site throughout the operation, in accordance with the regulatory permits.



Your safety is the top priority!

Large equipment will be used. Please observe all caution signs/barriers, and stay a safe distance from the work area.

📍 WHERE



-  Talbert Channel Outlet, Huntington Beach
-  Primary Sand Relocation Area

📅 WHEN

Anticipated Construction Duration

June 16 - Friday, June 26 2026

Working Hours

Monday - Friday, 5 a.m. - Sundown

The construction schedule is tentative and subject to change due to weather and other factors.

CONTACT INFO

-  Operations & Maintenance Front Desk
-  714-955-0200

 pw.oc.gov

 projectinfo@pw.oc.gov



[ocpublicworks](https://www.facebook.com/ocpublicworks)

Para ver este documento en español, visite...

要查看此告示之中文版, 請登入 ...

Muốn xem văn kiện này bằng tiếng Việt, xin bấm vào ...

이 문서를 한국어로 보고 싶다면 ...

pw.oc.gov/news